



Committed to service

Product data sheet

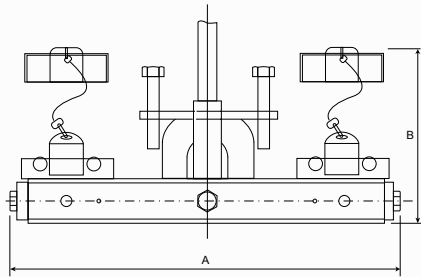
CLAMP SDRR

Description

Fixing, opening and closing equipment for the positioning of the necessary elements to be welded, ensuring the exact location of all parts prior to the welding process.

Specifications

Material	Carbon Steel
Lenght	A
Height	B
Width	17,2 cm
Unit Min	1
Custom code	93 13 80 00



Code	REF. KLK	REF. SNCF	Weight (kg) Unit weight	A/B cm	Unit
18006	Clamp SDRR 95	7.393.4935.5	2,300	28,5/28	1
18005	Clamp SDRR 50	7.939.4939.7	2,300	27/28	