



Committed to service

Product data sheet

MOULD MRR-50

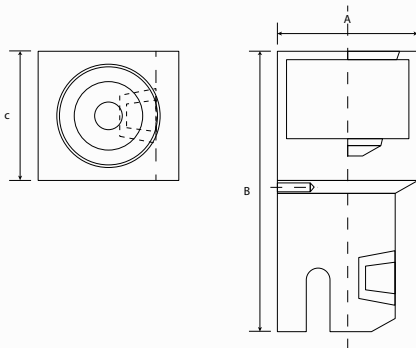
Description

Reusable mould, for making welds using an exothermic process of 50mm² connections to the head of the rail.

Mould machined from refractory material (graphite).
Estimated average duration of 70-100 welds*.

Specifications

Material	Pure graphite
Lenght	60 cm
Height	100 cm
Width	50 cm
Unit Min	4
Custom code	68 15 10 90



Code	REF. KLK	REF. SNCF	Weight (kg) Unit weight	A/B/C cm	Unit
17090	MRR-50D	7.393.4924.9	0,370	50/100/60	4
17091	MRR-50G	7.393.4923.1	0,370	50/100/60	4

*In order to maximise the service life of the equipment, KLK recommends that you follow all the steps indicated in the instruction manual for welding and subsequent maintenance.

