



Committed to service

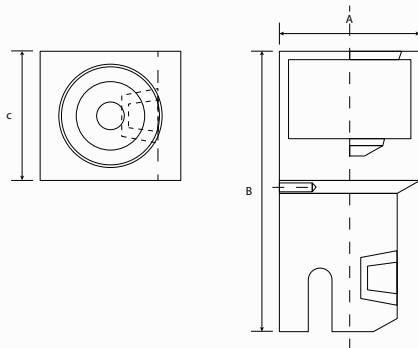
Product data sheet

MOULD MRR 95

Description

Reusable mould, for making welds using an exothermic process of 95 mm² connections to the head of the rail.

Mould machined from refractory material (graphite).
Estimated average duration of 70-100 welds*.



Specifications

Material	Pure graphite
Lenght	60 cm
Height	100 cm
Width	60 cm
Unit Min	4
Custom code	68 15 10 90

Code	REF. KLK	REF. SNCF	Weight (kg) Unit weight	A/B/C cm	Unit
60138	MRR-95D	7.393.4922.3	0,420	60/100/60	4
60137	MRR-95G	7.393.4921.5	0,420	60/100/60	4

*In order to maximise the service life of the equipment, KLK recommends that you follow all the steps indicated in the instruction manual for welding and subsequent maintenance.

