



Product data sheet

CLAMP C

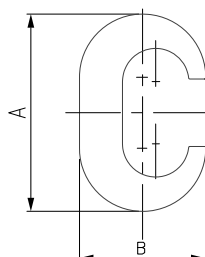
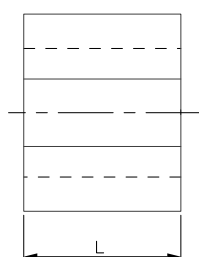


Descripción

Compression clamp made of pure electrolytic copper (99.9% Cu extrusion) suitable for Cu-Cu joints and branches.

Specifications

Material	Copper
Hardware	Steel
Tolerance	//
Length	//
Package	Check reference
Customs code	85369010



Code	REF.	multi-threaded <small>min/max</small> (mm ²)	multi-threaded <small>min/max</small> (mm ²)	A/B/L	Unit
		Wire MASTER CU	Wire DERIVATION CU		
07911	C-10	10-10	1,5-10	9,5/5,9/8	150
07905	C-16	16-25	2,5-16	19,4/12/17,5	50
07121	C-16	16-25	16-25	20,6/12/17,5	50
07898	C-35	35-40	10-25	25/15,6/21	50



Committed to service



Code	REF.	multi-threaded <small>min/max</small>	multi-threaded <small>min/max</small>	A/B/L	Unit
		(mm ²)	(mm ²)		
		Wire MASTER CU	Wire DERIVATION CU		
07653	C-35	35-40	35-40	26,6/15,6/21	50
07797	C-50	50-70	10-35	33,6/21/28	25
07849	C-50	50-70	40-70	33,9/21/28	25
07799	C-95	95-100	10-35	41,9/23,7/29	25
07859	C-95	95-100	40-70	40,9/25,2/29	25
07860	C-95	95-100	95-100	40,2/25,1/29	25
07835	C-100	100-125	25-125	41,9/23,7/29	10
07626	C-150	150-185	25-100	44,1/27,2/30	10
07863	C-150	150-240	10-70	60,8/31,1/22,4	10
07862	C-150	150-240	95-120	68/34/22,4	10
07912	C-150	150-240	150-240	74/34/32	10

